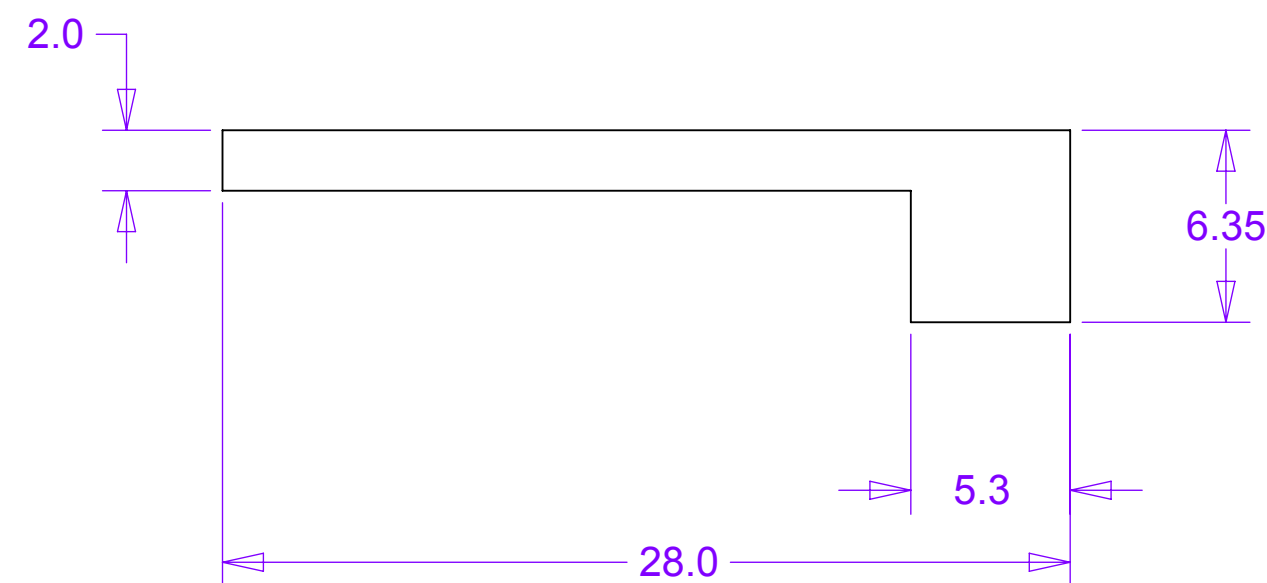
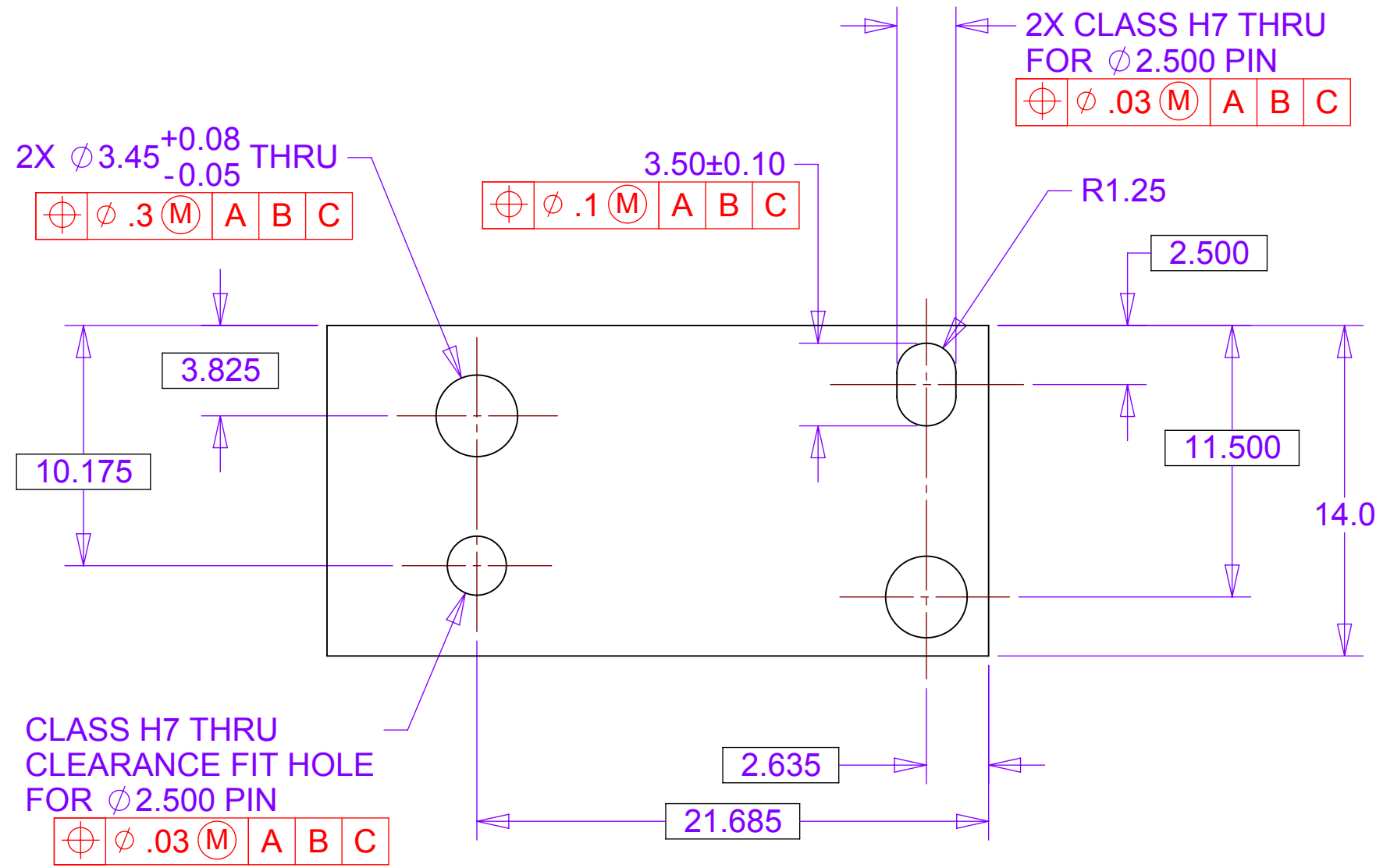
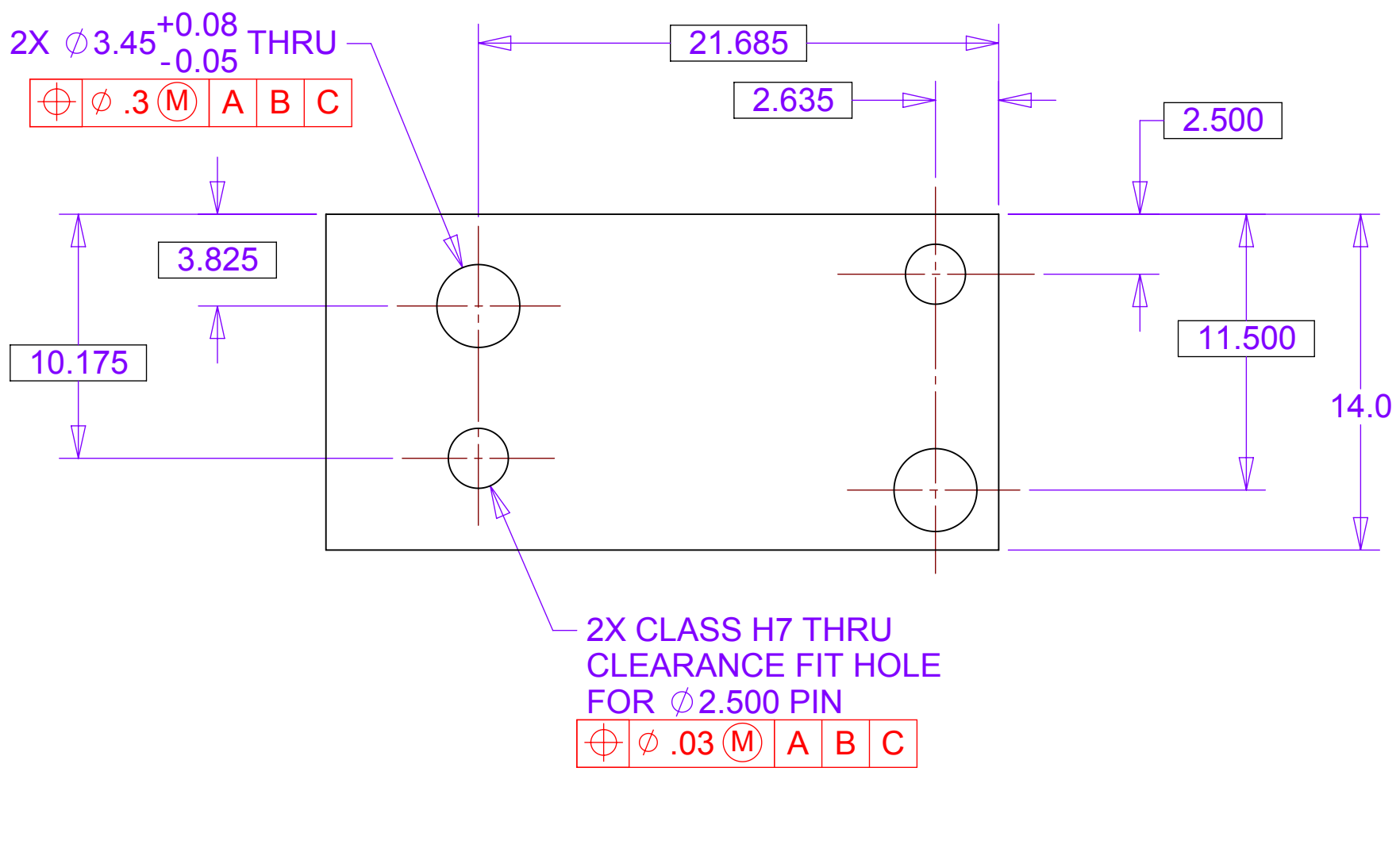
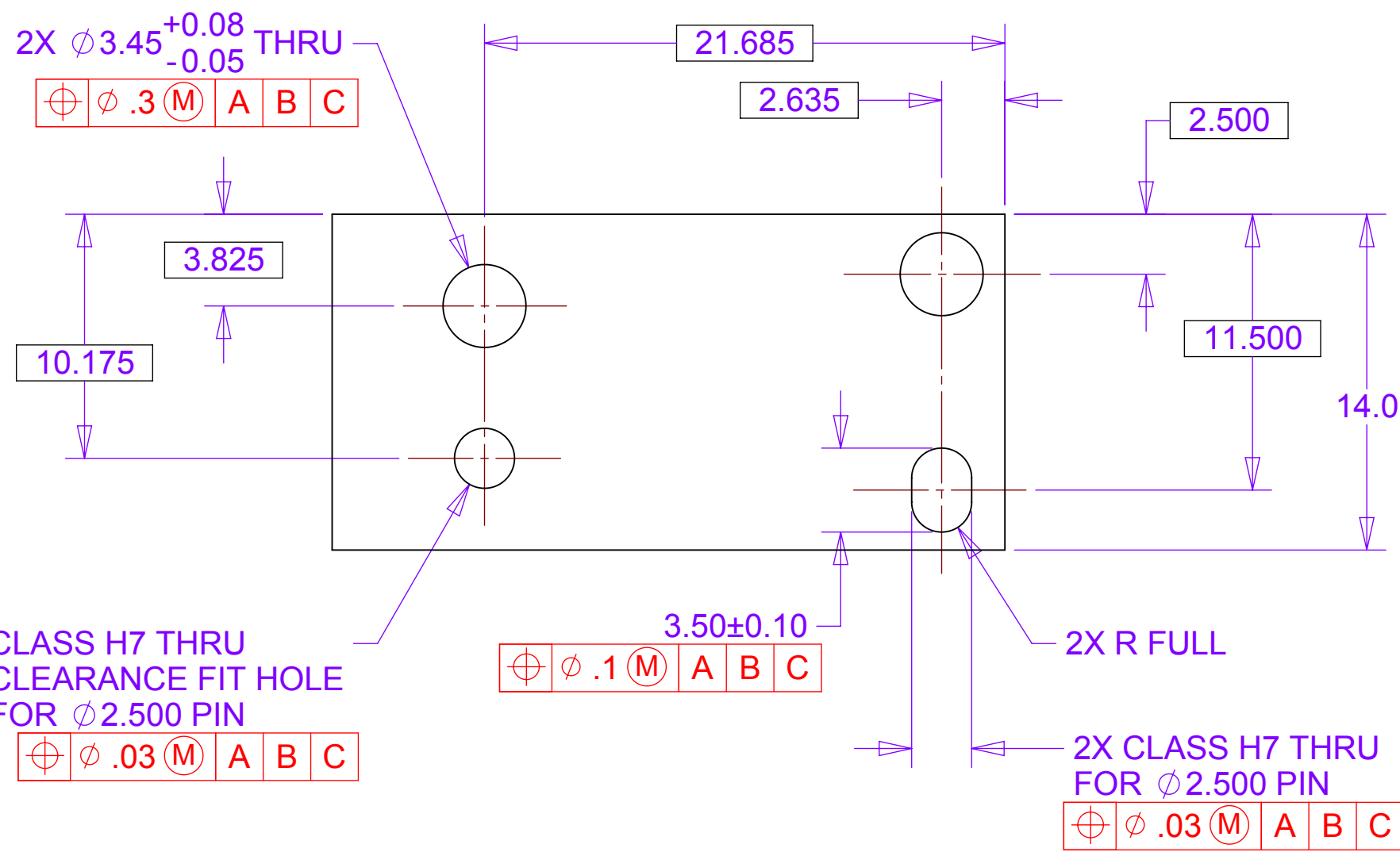
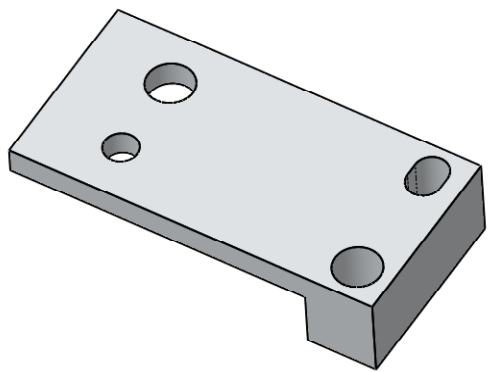
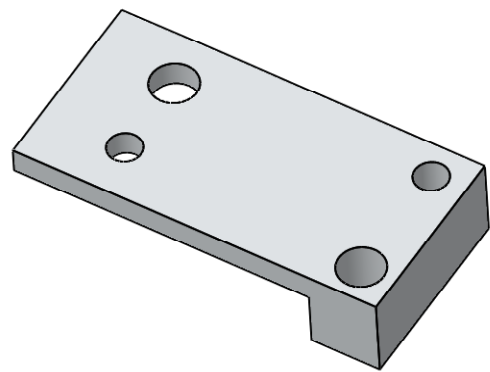
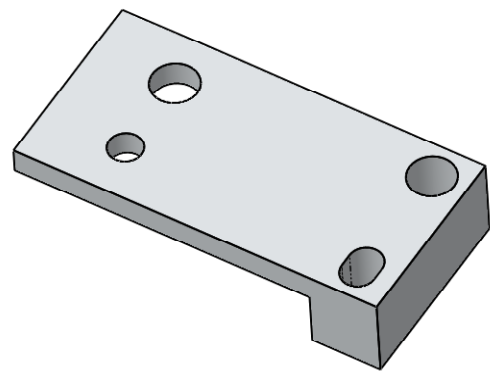
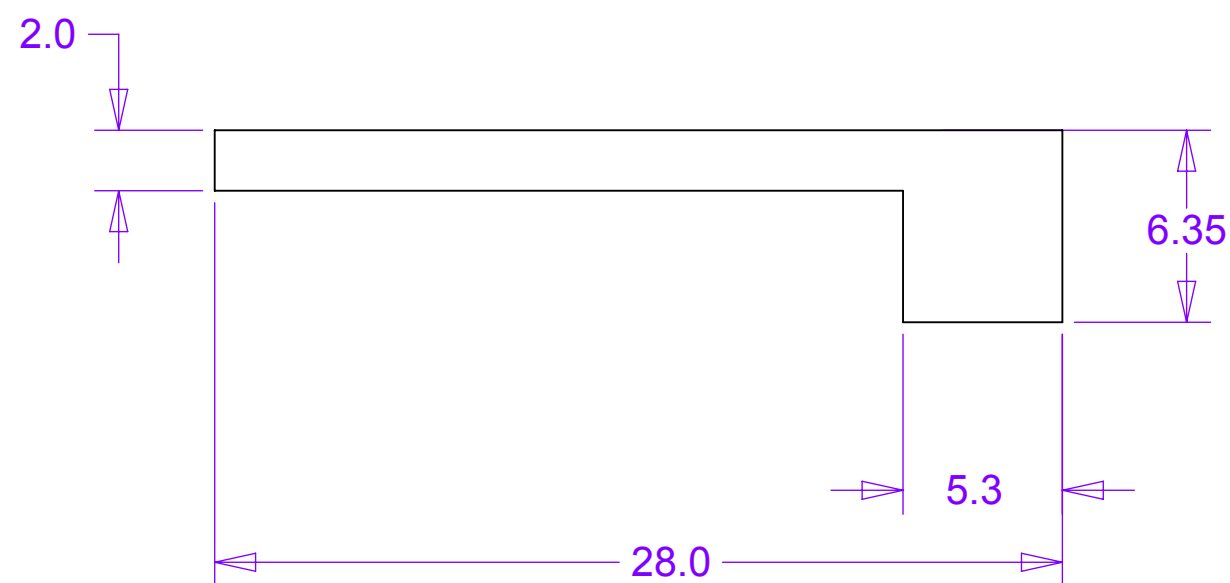


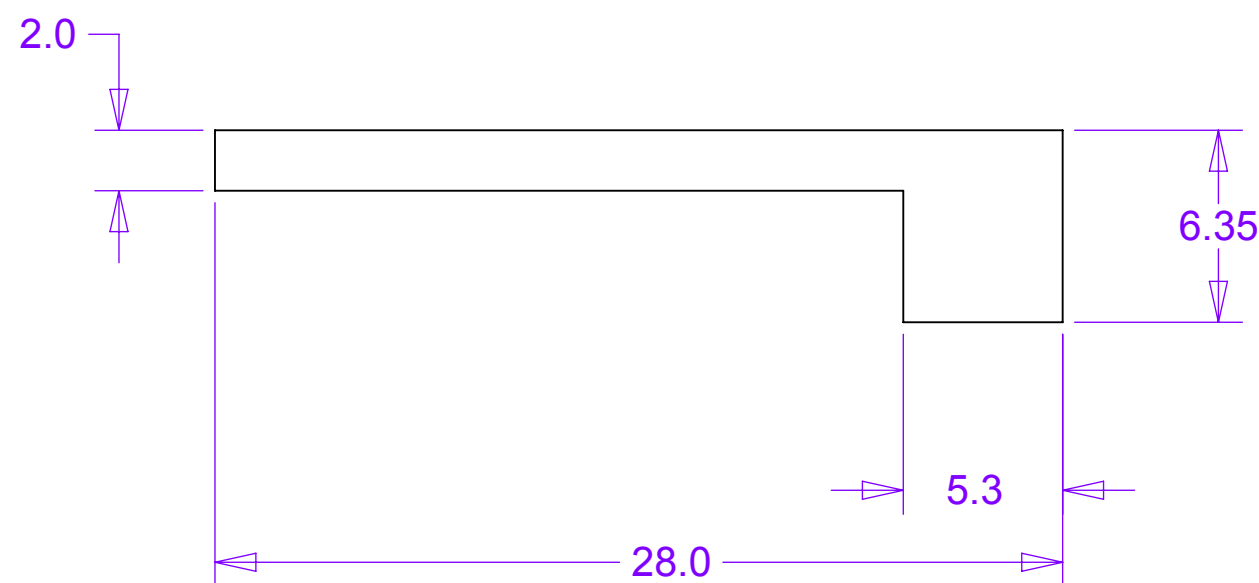
	REVISIONS		
REV	DESCRIPTION	DATE	APPROVED



-1 STATION RETAINER 1



-3 STATION RETAINER 2

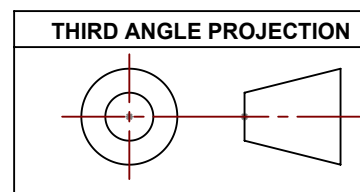


-5 STATION RETAINER 3

NOTES: UNLESS OTHER WISE SPECIFIED

- ALL DIMENSIONS IN MILLIMETERS
- DIMENSIONS AND TOLERANCING PER ASME Y14.5M-1994
- SURFACE TEXTURE PER ANSI/ASME B 46.1-1985
- REMOVE ALL BURRS AND BREAK SHARP EDGES TO A MAXIMUM OF .4
- ALL INSIDE CORNERS TO BE .4 RADIUS MAX
- COUNTERSINK 82 DEGREES ALL TAPPED HOLES TO MAJOR DIAMETER
- COUNTERSINK 82 DEGREES APPROXIMATELY .08/1.5 DEEP ALL DRILLED HOLES
- PARTS TO BE THOROUGHLY CLEANED TO REMOVE ALL OIL, GREASE, DIRT AND CHIPS
- PART NUMBER (DRAWING NO., DASH NO., REVISION NO., SERIAL NO.) TO BE CLEARLY MARKED ON THE PACKAGING BAG OR PART ITSELF.

MATERIAL: 6061-T6 Aluminum



UNLESS OTHERWISE SPECIFIED: DIMENSIONS ARE IN MILLIMETERS -TOLERANCES-		CAD GENERATED DRAWING, DO NOT MANUALLY UPDATE DO NOT SCALE DRAWING		<div>HYTEC, INC</div> <div>TITLE</div> <div>PHENIX CENTRAL UPGRADE FVTX SYSTEM STATION ASSEMBLY STAND STATION RETAINER 1,2,3</div>																					
DECIMALS X = +/- .5 .X = +/- .1 .XX = +/- .01 .XXX = +/- .001	ANGULAR .X = +/- 30° .XX = +/- 15° SURFACE FINISH = 250																								
FINISH		<table><tr><td></td><td>SIGNATURE</td><td>DATE</td></tr><tr><td>Designer</td><td>Roger L. Smith</td><td>5/4/2010</td></tr><tr><td>Drawn</td><td>Roger L. Smith</td><td>5/4/2010</td></tr><tr><td>Checked</td><td>Walt Sondheim</td><td>5/27/2010</td></tr><tr><td>Engineer</td><td>RJ Ponchione</td><td>5/4/2010</td></tr><tr><td>Approved</td><td>Walt Sondheim</td><td>5/27/2010</td></tr></table>			SIGNATURE	DATE	Designer	Roger L. Smith	5/4/2010	Drawn	Roger L. Smith	5/4/2010	Checked	Walt Sondheim	5/27/2010	Engineer	RJ Ponchione	5/4/2010	Approved	Walt Sondheim	5/27/2010	DWG. NO.		SIZE	SHEET NO.
	SIGNATURE	DATE																							
Designer	Roger L. Smith	5/4/2010																							
Drawn	Roger L. Smith	5/4/2010																							
Checked	Walt Sondheim	5/27/2010																							
Engineer	RJ Ponchione	5/4/2010																							
Approved	Walt Sondheim	5/27/2010																							
PART NO. 111-PHX-01-5226-1,2,3				111-PHX-01-5226 D 1 of 1																					
				SCALE 4:1		REVISION																			

THIS DOCUMENT CONTAINS INFORMATION THAT IS THE PROPRIETARY PROPERTY OF HYTEC, INC.
REPRODUCTION, DISCLOSURE, OR RELEASE TO OTHERS, MANUALLY OR ELECTRONICALLY,
IS STRICTLY PROHIBITED WITHOUT THE PRIOR WRITTEN CONSENT OF HYTEC, INC.